

LARGE ITEM COLLECTION (RESIDENTIAL PROPERTIES ONLY)

- Collection occurs on **your collection day** during the week specified on your collection schedule. Items are to be placed curbside no earlier than Sunday of Large Item Collection Week (May 25th & September 7th).
- Scrap metal & Non-Freon appliances, Freon appliances and Electronics **must be placed in separate piles** as they are collected separately for recycling.
- Small items or material placed out in garbage bags or cardboard boxes WILL NOT BE collected.**
- Remove all fluids, gasoline from items (i.e. lawn mower). • Remove batteries from ALL items.
- Material must be manageable by two (2) people and cannot exceed 80 lbs (36kg), 27ft³ (.76m³) or 6 ft (1.8 m).

✓ ACCEPTABLE LARGE HOUSEHOLD ITEMS

Material must be sorted into **4 separate piles**: Scrap Metal & Non-Freon Metal Appliances, Freon Appliances, Acceptable Large Household Items, Electronic Waste:

✓ Scrap Metal & Non-Freon Metal Appliances (Separate Pile)

- ✓ BBQ's, stainless steel sinks, bikes, exercise equipment, microwave
- ✓ Non-Freon Appliances: oven, washer, dryer, dishwasher



✓ Freon Appliances (Separate Pile)

- ✓ Fridge, freezers, air conditioners, water coolers, dehumidifiers. **Freon does not have to be removed. Remove lids & doors from fridges/freezers**



✓ Acceptable Large Items (Separate Pile)

- ✓ Artificial Christmas Tree (Remove from cardboard box)
- ✓ Boxspring/mattresses
- ✓ Broken garbage cans, plastic totes, etc. **MUST BE LABELED "FOR COLLECTION"**
- ✓ Carpets & underlay
- ✓ Furniture (desks, couches)
- ✓ Plastic - large, bulky household plastic items (children's swimming pool, lawn chair, outdoor toys)
- ✓ Pool covers
- ✓ Luggage & hockey bags larger than 9" x 14" x 22"
- ✓ Mops, brooms, shovels & rakes (non-metal)



✓ Electronic Waste (Separate Pile)

- ✓ TVs
- ✓ Computers
- ✓ Radios
- ✓ Speakers

✗ NON-ACCEPTABLE ITEMS - Must be brought to OVWRC (tipping fees may apply)

✗ Construction/Renovation Material

- ✗ Bathrooms, toilets, vanities, cupboards, countertops, sinks (non-metal)

✗ Concrete

- ✗ Drywall
- ✗ Flooring
- ✗ Vinyl siding, shingles
- ✗ Windows & doors
- ✗ Wood (Lumber, plywood, etc.)
- ✗ Wood pallets
- ✗ Propane tanks
- ✗ Plastic flower pots & trays
- ✗ Hazardous waste

✗ Glass table tops (broken glass is acceptable tightly wrapped in a cardboard box or in a rigid reusable container, clearly labeled broken glass and set out for regular garbage collection)

- ✗ Tires
- ✗ Clothing & textiles
- ✗ Bagged garbage
- ✗ Cardboard boxes
- ✗ Items smaller than 9" x 14" x 22" or items that can fit into a standard garbage bag or can

Did you know some of these items may be suitable for Reuse? Check out OVWRC's Reuse Centre. Visit www.ovwrc.com for more information.

Electronic Waste (E-Waste) & Hazardous or Special Waste (HSW)

Accepted year round at the Ottawa Valley Waste Recovery Centre during regular operating hours OR at an Environmental Day (NO CHARGE)

ENVIRONMENTAL DAYS (FOR DROP-OFF OF E-WASTE, HSW)

8:00 am to 2:00 pm

May 10th
Petawawa Civic Centre

June 7th
Pembroke & Area Community Centre (Pem Ice 2)
(enter off Boundary Rd.)

Date, location and events subject to change.

TIRES

Tires are NOT accepted at Environmental Days and are NOT collected curbside. Tires (passenger & light truck tires, 10/tires/day/customer) can be dropped off at OVWRC, no charge.

HSW MATERIAL ACCEPTED (Containers 5 gallon (20L) or smaller)

Ensure HSW is in the original or a well-marked container to indicate the contents. Containers must be properly sealed with no visible leaks. Unlabeled/unidentified products cannot be accepted.

- Batteries
- Helium tanks (single use)
- Light bulbs (fluorescent, incandescent, LED)
- Mercury thermometers & switches
- Needles, syringes, lancets (packaged in a sealed plastic container or sharps container OR return to local pharmacy)
- Oil, oil filters & empty oil containers
- Paints
- Propane cylinders
- Pesticides & herbicides

Small businesses must receive pre-approval before bringing HSW - visit ovwrc.com to download application forms.

Please bring small loads of household hazardous waste to the depot. Large loads may not be accepted ½ hour before closing. If a load consists of a combination of solid and liquid hazardous waste, the total of the wastes cannot exceed 90 kg/litres per load. Individual containers/pails cannot exceed 20 L (5 gallon).

E-WASTE ACCEPTED (RESIDENTS & BUSINESSES)

- Answering machines
- Cameras
- CD/DVD players & drives
- Cell phones
- Computers & laptops
- Electrical instruments (i.e. electric guitar)
- Keyboards & mice
- Monitors
- Print cartridges
- Radios/Stereos
- Telephones
- TVs/VCRs
- Video game devices & consoles



E-Waste Accepted Curbside During Large Item Collection

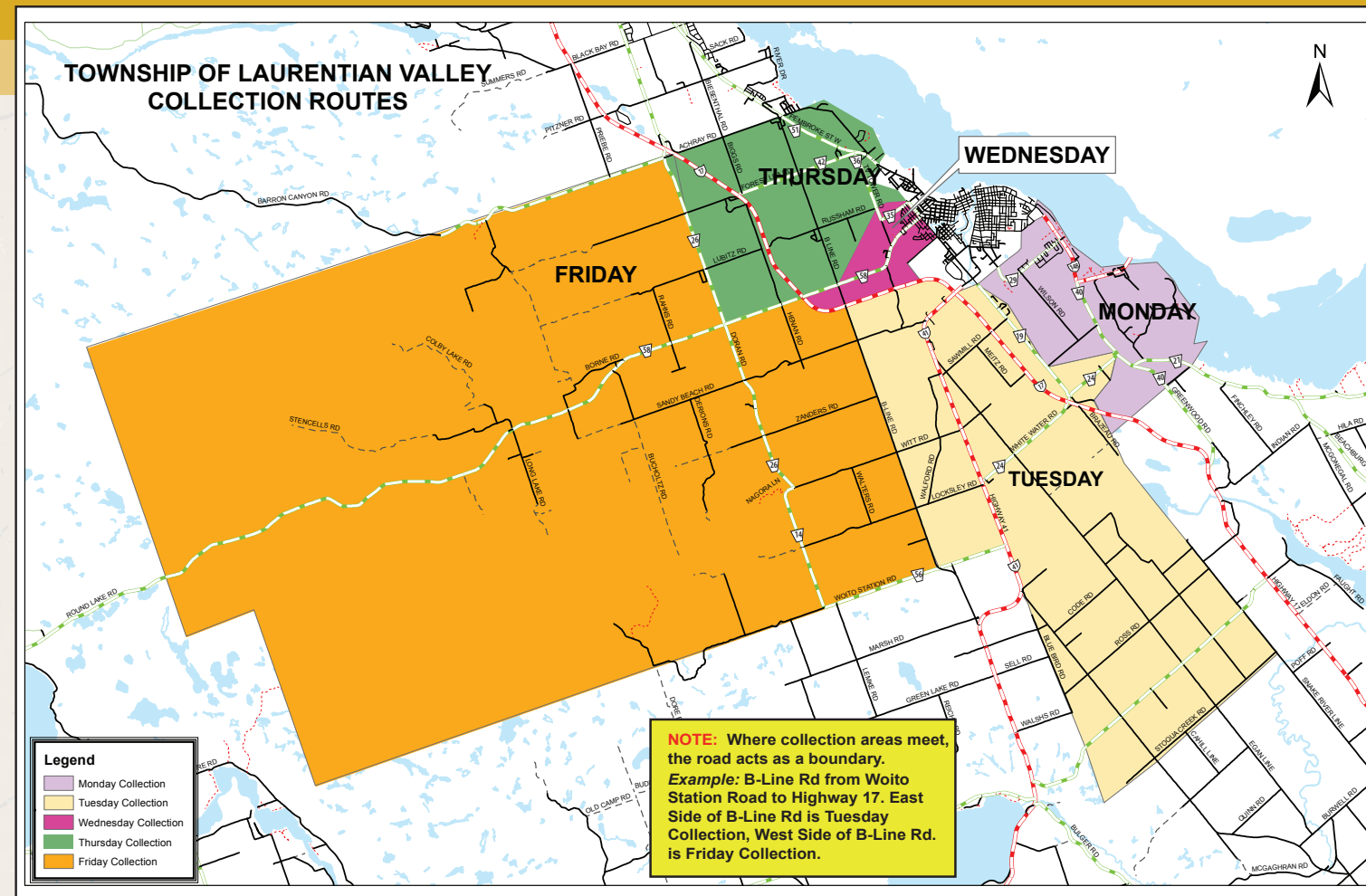
Due to Health & Safety concerns, OVWRC staff are not able to assist with unloading of material from customer vehicles

FIND OUT WHAT GOES WHERE!
Search 100's of items using the online tool at www.ovwrc.com/what-goes-where

DO NOT throw these items in garbage or recycling.

Collection Schedule 2025

Please refer to the map for your collection day



MONDAY
TUESDAY
WEDNESDAY
THURSDAY
FRIDAY

RECYCLING INQUIRIES AND MISSED COLLECTION

1-855-752-3257
area3@millerwaste.ca

OTHER COLLECTION INQUIRIES

Miller Waste Systems Inc: 613-735-6925
or Contact the Municipal Office
613-735-6291
info@lvtownship.ca

Contact the Municipal Office for Purchase of Blue Boxes, Yellow Bins and Green Carts.

LITTER PROBLEMS? We Have You Covered! Nets for sale at your Municipal office.

FIND OUT WHAT GOES WHERE! Search 100's of items using the online tool at www.ovwrc.com/what-goes-where



TOWNSHIP OF LAURENTIAN VALLEY

Collection Schedule 2025

If you require an alternate format or communication supports for this document, please contact the Municipal Office at 613-735-6291 or info@lvtownship.ca

Please refer to the map for your collection day. **Turn calendar over for next 5 months**



ATTENTION RESIDENTS

As of March 28, 2025, the Township of Laurentian Valley's recycling program will be managed by Circular Materials, a national not-for-profit organization that is committed to building an efficient and effective recycling system in Ontario.

Starting March 28, 2025, please contact Miller Waste for any recycling collection inquiries by phone at 1-855-752-3257 or by email at area3@millerwaste.ca. They can be contacted for questions about missed collection and any other recycling-related inquiries. Please contact your Municipal Office at 613-735-6291 or info@lvtownship.ca for questions about replacement blue boxes and yellow bins.

For more information, visit circularmaterials.ca/LAURENTIANVALLEY



RECYCLING CONVENIENCE DEPOT

Acceptable **residential** recycling material may be dropped off at Ottawa Valley Waste Recovery Centre's Convenience Depot for no charge starting March 28, 2025. It is located at 900 Woito Station Road (Gate 1). Operating hours are noted on the back of this collection schedule.

Visit <https://ovwrc.com/blue-box-transition/> for more information or contact the Centre at 613-735-7537 or info@ovwrc.com

APRIL 2025						
SUNDAY	MONDAY	TUESDAY	WEDNESDAY	THURSDAY	FRIDAY	SATURDAY
	March 31	1	2	3	4	5
6	7	8	9	10	11	12
13	14	15	16	17	18 Good Friday	19
20 Collection moves ahead one day due to holiday	21	22	23	24	25	26
27	28	29	30			

JUNE 2025						
SUNDAY	MONDAY	TUESDAY	WEDNESDAY	THURSDAY	FRIDAY	SATURDAY
1	2	3	4	5	6	7 Pembroke
8	9	10	11	12	13	14
15	16	17	18	19	20	21
22	23	24	25	26	27	28
29	30					

All waste streams to be set-out by 6:30 a.m. for collection. Material must be placed 5 to 6 feet (1.5 to 1.8 m) from curb or roadside (in driveway, not on sidewalk or snow bank). Green cart must have 2 to 3 feet (0.6 to 0.9 m) clearance around it to allow for proper collection and with wheels facing away from the road with the lid closed. Containers cannot exceed 50 lbs (23kg) (with the exception of the green cart).



For a list of acceptable items please refer to the guide included with this calendar or visit www.ovwrc.com/what-goes-where
Questions? Contact OVWRC 613-735-7537 or info@ovwrc.com.

MAY 2025						
SUNDAY	MONDAY	TUESDAY	WEDNESDAY	THURSDAY	FRIDAY	SATURDAY
	May 31	1	2	3		
4	5	6	7	8	9	10 Petawawa
11	12	13	14	15	16	17
18 Collection moves ahead one day due to holiday	19	20	21	22	23	24
25 Large items may be placed curbside	26	27	28	29	30	31

JULY 2025						
SUNDAY	MONDAY	TUESDAY	WEDNESDAY	THURSDAY	FRIDAY	SATURDAY
		1	2	3	4	5
6	7	8	9	10	11	12
13	14	15	16	17	18	19
20	21	22	23	24	25	26
27	28	29	30	31		

COLLECTION INQUIRIES & MISSED COLLECTION

For Recycling Inquiries: 1-855-752-3257 area3@millerwaste.ca
All other Collection Inquiries: Miller Waste Systems Inc. 613-735-6925
or Contact the Municipal Office 613-735-6291
info@lvtownship.ca



TOWNSHIP OF LAURENTIAN VALLEY

Collection Schedule 2025

If you require an alternate format or communication supports for this document, please contact the Municipal Office at 613-735-6291 or info@lvtownship.ca

Please refer to the map for your collection day.

AUGUST 2025						
SUNDAY	MONDAY	TUESDAY	WEDNESDAY	THURSDAY	FRIDAY	SATURDAY
Hazardous and Electronic Waste accepted at OVWRC year round!					1	2
3	4	5	6	7	8	9
10	11	12	13	14	15	16
17	18	19	20	21	22	23
24	25	26	27	28	29	30
31						

OCTOBER 2025						
SUNDAY	MONDAY	TUESDAY	WEDNESDAY	THURSDAY	FRIDAY	SATURDAY
Leaves & Grass Clippings (loose or in paper bags) accepted at OVWRC - No charge. Fees apply for Branches, tree limbs and stumps.						
5	6	7	8	9	10	11
12	13	14	15	16	17	18
19	20	21	22	23	24	25
26	27	28	29	30	31	

DECEMBER 2025						
SUNDAY	MONDAY	TUESDAY	WEDNESDAY	THURSDAY	FRIDAY	SATURDAY
7	8	9	10	11	12	13
14	15	16	17	18	19	20
21	22	23	24	25	26	27
28	29	30	31			

SEPTEMBER 2025						
SUNDAY	MONDAY	TUESDAY	WEDNESDAY	THURSDAY	FRIDAY	SATURDAY
1	2	3	4	5	6	7
8	9	10	11	12	13	14
15	16	17	18	19	20	21
22	23	24	25	26	27	28
29	30					

NOVEMBER 2025						
SUNDAY	MONDAY	TUESDAY	WEDNESDAY	THURSDAY	FRIDAY	SATURDAY
2	3	4	5	6	7	8
9	10	11	12	13	14	15
16	17	18	19	20	21	22
23	24	25	26	27	28	29
30						

Not Sure Where It Goes?

Easily find out at www.ovwrc.com/what-goes-where

Search 100's of items to see if something can be recycled, composted, reused or disposed of using the on-line search tool available on our website.

All waste streams to be set-out by 6:30 a.m. for collection. Material must be placed 5 to 6 feet (1.5 to 1.8 m) from curb or roadside (in driveway, not on sidewalk or snow bank). Green cart must have 2 to 3 feet (0.6 to 0.9 m) clearance around it to allow for proper collection and with wheels facing away from the road with the lid closed. Containers cannot exceed 50 lbs (23kg) (with the exception of the green cart).

COLLECTION INQUIRIES & MISSED COLLECTION

For Recycling Inquiries: 1-855-752-3257 area3@millerwaste.ca
All other Collection Inquiries: Miller Waste Systems Inc. 613-735-6925
or Contact the Municipal Office 613-735-6291
info@lvtownship.ca



For a list of acceptable items please refer to the guide included with this calendar or visit www.ovwrc.com/what-goes-where
Questions? Contact OVWRC 613-735-7537 or info@ovwrc.com.

Recyclables must be placed loose inside your yellow bin or other open top, reusable container (i.e. laundry basket, Rubbermaid container, etc.)

Residential recycling in plastic bags WILL NOT be collected.

✓ RECYCLABLES MUST BE EMPTY AND RINSED

Return all eligible liquor, wine, beer containers to the Beer Store for a refund.



DO NOT PUT IN RECYCLING

- ✗ Containers filled with liquid
- ✗ Home health care waste
- ✗ Sharps & needles (dispose of at your local pharmacy)
- ✗ Sharp items such as knives
- ✗ Plastic bags & Styrofoam (all types)
- ✗ Propane tanks
- ✗ Black plastic
- ✗ Batteries



YELLOW BIN (Containers)

3 BAG/CONTAINER LIMIT PER HOUSEHOLD.
Garbage can be set out in plastic bags or garbage cans.



DO NOT PUT IN GARBAGE

- ✗ Batteries
- ✗ Hazardous Waste
- ✗ Needles/Sharps
- ✗ Electronics



GARBAGE

LEAF & YARD WASTE (L&YW)

Extra L&YW will ONLY be collected on specific days. Check your schedule for the L&YW symbol.

✓ ACCEPTABLE ITEMS
✓ Leaves ✓ Branches ✓ House & garden plants
✓ Garden/hedge/tree trimmings

Individual branches must be no more than 2" (5 cm) in diameter or 4 ft (1.2 m) in length. Bundled branches must be no more than 2 ft (0.60 m) in diameter. Individual bag/bundle/container cannot exceed 50 lbs (23 kgs).

Use open top, reusable containers, cardboard boxes, or paper yard waste bags.

Material in plastic bags will not be collected.

L&YW is collected separately from other materials. Green carts will only be collected on green cart collection days.

Leaves & Grass Clippings (loose or in paper bags) accepted at OVWRC, no charge. Fees apply for Mixed Leaf & Yard Waste, Branches, Tree Limbs and Stumps.

LEAF & YARD WASTE

Paper recycling must be placed loose in a blue box, cardboard box, paper bag or other reusable open top container.

Residential recycling in plastic bags WILL NOT be collected (with the exception of shredded paper).



BLUE BOX (Paper & Cardboard)

To absorb moisture, reduce odours and help keep material from freezing to the cart, place crumpled newspaper at the bottom of your cart or layer dry leaf & yard waste over wet food waste or use a leaf & yard waste bag to line your cart. Material can be wrapped in newspaper, paper bags or other compostable box (i.e. cereal, frozen food, etc.).



DO NOT PLACE THESE ITEMS IN GREEN CART

- ✗ Plastics of any kind (including plastic bags claiming to be biodegradable or compostable)
- ✗ Plastic wrap
- ✗ Diapers
- ✗ Kitty litter
- ✗ Pet waste
- ✗ Plastic & glass containers
- ✗ Ashes
- ✗ Dryer lint

When placed out for collection the **green cart lid must be closed** with **wheels facing away from the road**.



GREEN CART (Food Waste)